

# OLEAS

Design: Opera Contemporary Studio



Struttura: vetro soffiato di Murano  
Top: frassino o noce canaletto

Structure: Murano blown glass  
Top: ash wood or canaletto walnut

Ogni vetro soffiato di Murano è frutto di una lavorazione artigianale esclusiva.

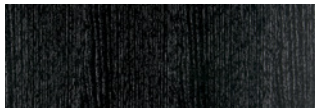
Eventuali differenze in dimensioni, colore e finiture non rappresentano un difetto, bensì un pregio che ne testimonia l'autenticità.

Each Murano blown glass is the result of exclusive craftsmanship.

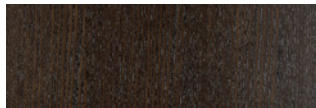
Any differences in size, color and finish are not a defect, but rather a value that proves its authenticity.



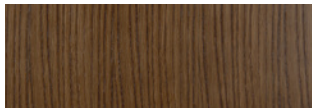
VSB  
VETRO SOFFIATO BRONZO  
BRONZE BLOWN GLASS



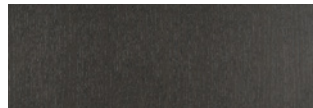
EBA  
TINTO EBANO  
EBONY STAINED



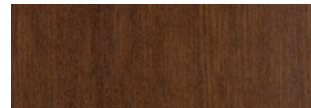
WEN  
TINTO WENGÉ  
WENGÉ STAIN



NCA  
TINTO TABACCO  
TOBACCO STAIN



GRY  
TINTO GRIGIO  
GREY STAIN



CIL  
TINTO CILIEGIO  
CHERRY STAIN



N / N00  
NOCE CANALETTO  
CANALETTO WALNUT

---

Art. 45231 - 45231/N

Tavolino in vetro soffiato | Blown glass small Table

cm Ø 40 h 50 (in Ø 15 3/4 h 19 5/8)

Volume: mc 0,20 - Peso Lordo/Gross Weight: kg 21



---

Art. 45232 - 45232/N

Tavolino in vetro soffiato | Blown glass small Table

cm Ø 60 h 41 (in Ø 23 5/8 h 16 1/8)

Volume: mc 0,26 - Peso Lordo/Gross Weight: kg 30

